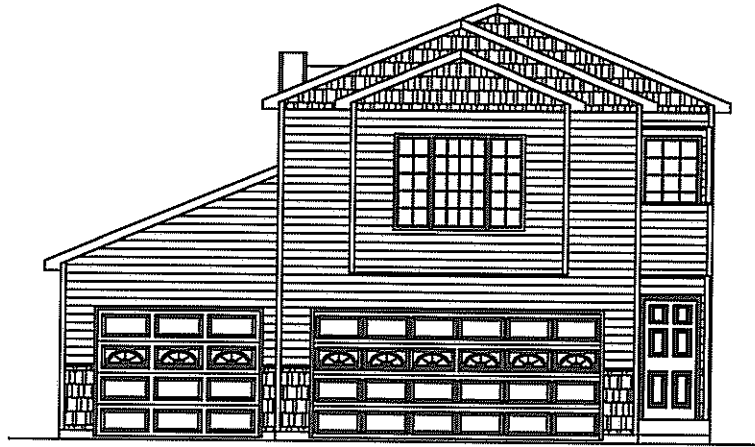
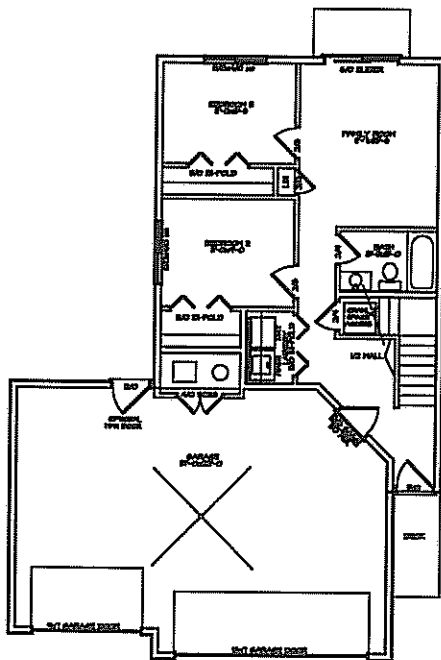


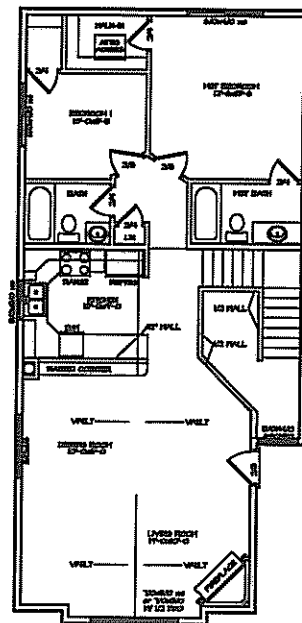
- 4 BEDROOMS
- FAMILY ROOM
- VAULTED CEILING LIVING ROOM
- 2 1/2 BATHS
- CORNER FIREPLACE
- 3-CAR GARAGE



FRONT ELEVATION  
 "A"



1ST FLOOR



2ND FLOOR

BAYFIELD OPT 2

1728 sqFT (TOTAL)