



# SUNRISE MEADOWS

## THE DOUGLAS | TRADITIONAL SERIES



### HOME FEATURES:

- > 4 Bedrooms
- > 2.5 Bathrooms
- > Den, Bonus Playroom
- > Quartz or Granite Kitchen Counters, Walk in Pantry
- > Huntwood Cabinets Throughout
- > Stainless Appliances
- > Free Standing Soaking Tub in Master Bath
- > 2 Car Garage, Mud Room

### SQUARE FOOTAGE:

Elevation A = 2,837 SF  
Elevation B = 2,845 SF



The Douglas features a grand entrance with nine foot ceilings and an open first floor layout perfect for social gatherings. Large windows surround the impressive great room and provide an abundance of natural light. The sleek chef's kitchen features a large walk-in pantry, center island topped with granite or quartz, and stainless steel appliances. The powder room, mud room and covered patio add to the functionality of this main floor living space. The grand master retreat with vaulted ceilings features a blissful five-piece bath and spacious walk-in closet. Three additional bedrooms, one full bath, oversized utility room and massive playroom finish off the second floor. A two car garage with added tool/work space adds the final touch to this living oasis.

**For more information call: 425-358-7056**  
**Or visit: [www.SunriseMeadows.net](http://www.SunriseMeadows.net)**

Hultquist Homes, Washington Division - Represented By:

**RE/MAX**® **RE/MAX Integrity**  
Trena Kupper, cell 206-310-2668  
email: trenaksales@gmail.com



[www.HultquistHomes.com](http://www.HultquistHomes.com)

THE DOUGLAS | TRADITIONAL SERIES

ELEVATION A & B — MAIN FLOOR

*(Same main floor for Elevation A & B)*

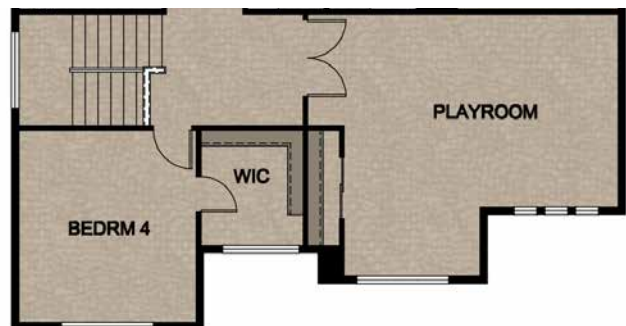


ELEVATION A — UPPER FLOOR



ELEVATION B — UPPER FLOOR

*(Elevation B has playroom extension in front)*



Specifications and finish choices subject to change without notice. Images, maps and diagrams depict home as artist's concept rendering. Dimensions and square footages are approximate.

For more information call: 425-358-7056

Or visit: [www.SunriseMeadows.net](http://www.SunriseMeadows.net)

Hultquist Homes, Washington Division - Represented By:



RE/MAX Integrity

Trena Kupper, cell 206-310-2668

email: [trenaksales@gmail.com](mailto:trenaksales@gmail.com)



[www.HultquistHomes.com](http://www.HultquistHomes.com)